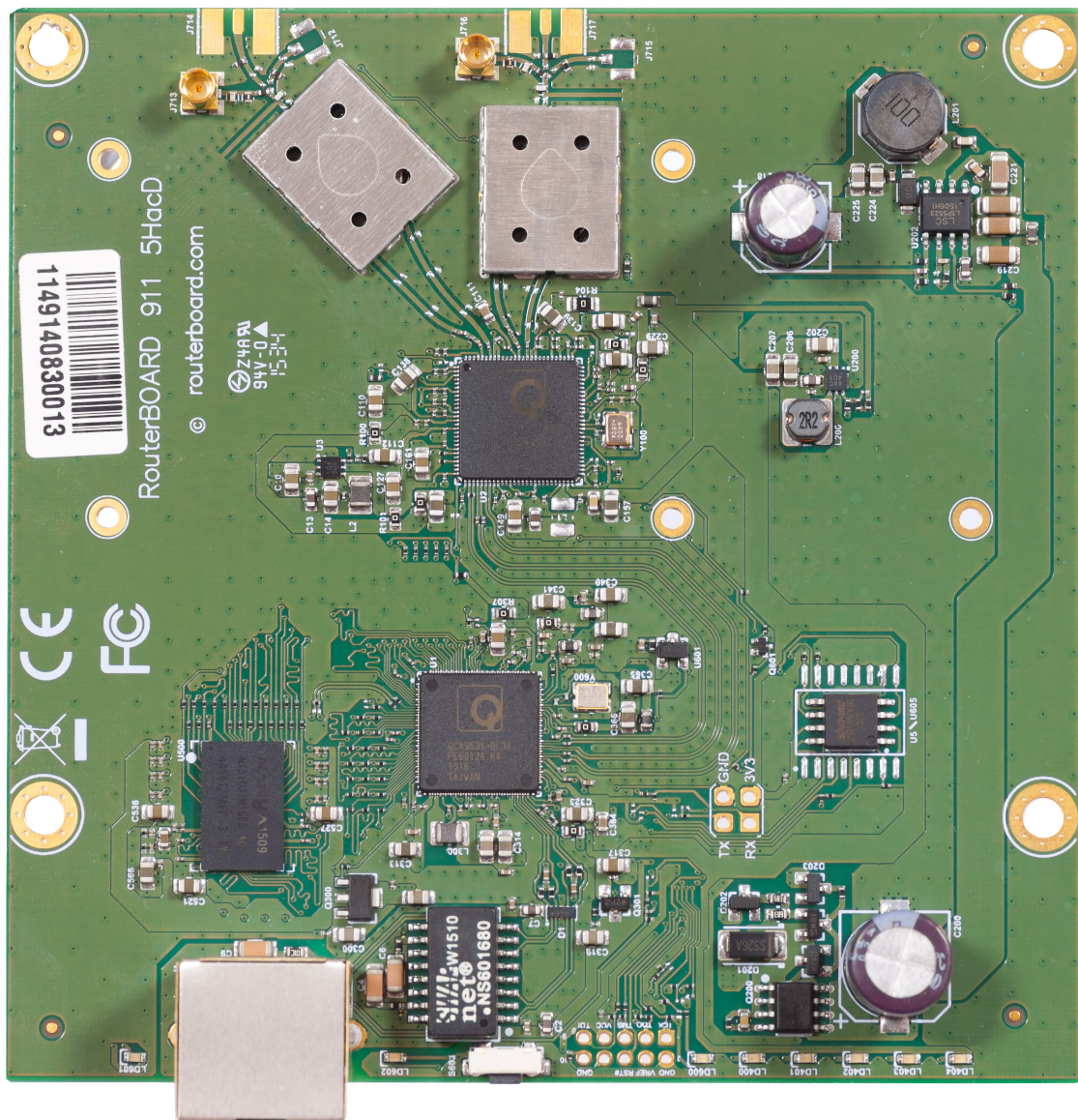


# 911 Lite5 ac

The 911 Lite5 ac is upgrade for our low-cost 911 Lite5 dual model.

It's a small CPE type RouterBOARD wireless router with an integrated 5Ghz dual-chain wireless card, now with added 802.11ac support. It's equipped with powerful 650MHz CPU and 64MB, great for building custom 5Ghz CPE or Backhaul units. Unit is equipped with 10/100Mbps Ethernet port.



## Specifications

Product code	RB911-5HacD (International) RB911-5HacD-US (USA)	
CPU	QCA9531	
CPU nominal frequency	650 MHz	
CPU core count	1	
Size of RAM	64 MB	
10/100 Ethernet ports	1	
Wireless	Built-in 5 GHz 802.11ac, dual-chain	
Wireless chip model	QCA9882	
Operating frequency	International 5150 - 5875 MHz	USA 5170 - 5250 MHz 5725 - 5835 MHz
PoE in	Yes	
Supported input voltage	10 V - 30 V (Jack or Passive PoE)	
LEDs	8 (6 user leds)	
Dimensions	105 x 105 mm	
Operating temperature	-40°C .. +70°C tested	
License level	3	
Operating System	RouterOS	
Max Power consumption	7 W	

## Wireless specifications

RATE	Tx (dBm)	Rx (dBm)
6MBit/s	29	-95
54MBit/s	26	-81
MCS0	29	-95
MCS7	25	-77
MCS9	22	-72