

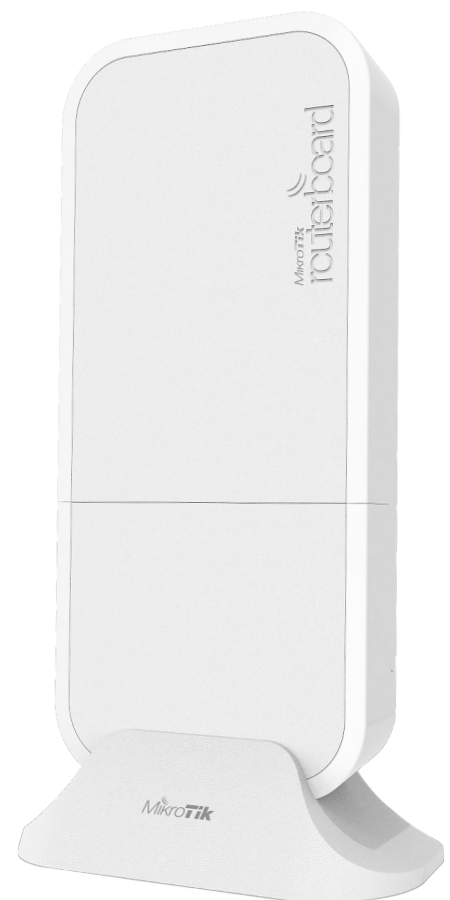
wAP ac LTE6 kit

Powerful and versatile dual-band wireless access point with CAT6 LTE support

A small package with huge ambition – the wAP ac LTE6 kit is an upgrade of our extremely cost-effective dual-band (2.4 / 5 GHz) home access point based on the popular weatherproof wAP form factor. Its new CAT6 LTE modem enables even greater download speed – up to 300 Mbps!

CAT6 also enables carrier aggregation and allows the device to use multiple bands at the same time. A huge advantage when there are a lot of LTE users in the area. It provides better responsiveness in a crowded environment and higher efficiency for weaker signal situations in the countryside.

wAP ac LTE6 kit has two Gigabit Ethernet ports – you can use the device as a wired router with LTE backup via the Micro SIM slot. Alternatively, you can enjoy smooth wireless experience anywhere – indoors or outdoors. wAP ac LTE is designed to deliver strong and reliable connection in almost any situation and weather conditions. It can withstand temperatures from -30 C° to +60 C° and can be easily mounted on walls, ceilings or poles.



Don't be fooled by the compact size – this device is powered by a four-core 716 MHz CPU and 128 MB RAM, capable of handling heavy loads. Dual-chain 2.4 GHz and dual-chain 5 GHz wireless for dual concurrent AP coverage will solve most interference issues in a crowded environment. For example, you can simultaneously use the 2.4 GHz channel for all your household mobile devices and reserve the 5 GHz channel for tasks that are sensitive to packet loss – such as streaming high-quality videos.

High performance, great value, astonishing durability, functional and non-intrusive design – wAP ac LTE6 kit will meet most demands without making sacrifices.

Specifications

| | |
|----------------------------|---|
| Product code | RBwAPGR-5HacD2HnD&R11e-LTE6 |
| CPU | Quad-core IPQ-4018 716 MHz |
| Size of RAM | 128 MB |
| Storage | 16 MB flash |
| 10/100/1000 Ethernet ports | 2 |
| Wireless | 2.4 GHz 802.11b/g/n dual-chain, 5 GHz 802.11a/n/ac dual-chain |
| Wireless regulations | Specific frequency range will be limited by country regulations |
| Wireless antenna max gain | 2.5 dBi |
| LTE antenna max gain | 4 dBi (with U.FL connector) |
| Antenna beam width | 360° |
| LTE category | 6 (300 Mbps downlink, 50 Mbps uplink) |
| 3G category | R7 (21 Mbps downlinks, 5.76 Mbps uplink) R8 (42.2 Mbps downlink, 5.76 Mbps uplink) |
| 2G category | Class12 |
| Micro SIM slot | 1 |
| Supported input voltage | DC jack 10 - 57 V |
| PoE in | Passive PoE 18-57 V or active 802.3af/at |
| Dimensions | 185 x 85 x 30 mm |
| Operating temperature | -30°C .. +60°C |
| Operating system | RouterOS, License level 4 |
| MiniPCIe slots | 1 |
| Max Power consumption | 16 W |

Supported bands

| wAP ac LTE6 kit | |
|------------------------|--|
| LTE (FDD) bands | 1(2100)/2(1900)/3(1800)/5(850)/7(2600)/8(900)/12(700)/17(700)/20(800)/25(1900)/ 26(850) |
| LTE (TDD) bands | 38(2600)/39(1900)/40(2300)/41n(2500) |
| 3G bands | 1(2100)/2(1900)/5(850)/8(900) |
| 2G bands | 2(1900)/3(1800)/5(850)/8(900) |

Wireless specifications

| Rate (2.4 GHz) | Tx (dBm) | Rx (dBm) | Rate (5 GHz) | Tx (dBm) | Rx (dBm) |
|----------------|----------|----------|--------------|----------|----------|
| 1MBit/s | 22 | -100 | 6MBit/s | 24 | -95 |
| 11MBit/s | 22 | -94 | 54MBit/s | 20 | -78 |
| 6MBit/s | 23 | -95 | MCS0 | 24 | -95 |
| 54MBit/s | 19 | -78 | MCS7 | 19 | -73 |
| MCS0 | 23 | -95 | MCS9 | 17 | -68 |
| MCS7 | 18 | -73 | | | |

Included parts



24 V 0.8 A power adapter



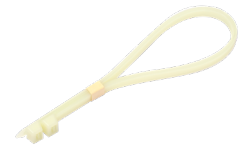
Screw kits



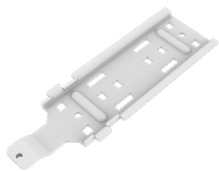
Desktop stand



Metal ring



Plastic straps



Mount base



Gigabit PoE injector



Ceiling mount base